



Manhattan Management Co, LLC

Office: 180 Franklin Corner Rd C-3, Lawrenceville, NJ 08648

Office Phone (609)896-1086
Emergency (609)209-4158

Office Staff:

- Resident Manager
Daniel Vega
- Maintenance Manager
Gary Bussell
- Office Manager
Kathy Harbeck
- Property Coordinator
Jeff Chen
- Leasing Consultant
Steve Payne

Maintenance Staff:

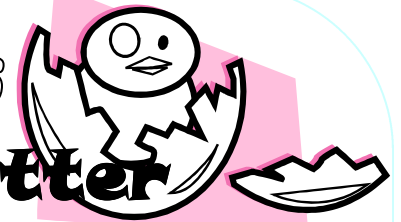
- Dan Hartman
- Dan Tesauro
- Bob Brown
- David Daniels
- Justin Foy

**\$150
Rent**

**Referral
Bonus**

Lawrenceville Gardens

Spring 06' Newsletter



March-April 2006

Volume II, Issue II

Log on to www.apartmentratings.com and post a review

Community Forum Is Launched!

Yet another feature has been added to the community website! Log on to <http://lawrencevilleapartments.com/LVGforum> to access the community forum. The forum can be used to discuss local events, post a wanted/for sale ad, write a blog, or even upload your own photos. I'd love for every resident to sign up and participate.

Sincerely, Steve Payne

We would like to welcome our new neighbors in the following units:

- D7, E6, F8, I4, J18,
- J20, K1, K10, K12,
- K14, K17, L18

Reduce, Reuse, Recycle, Repeat!

I know many of you recycle, but there's always an opportunity to do more, and here's why:

- Half of the Earth's forests and 95% of those in the US have already been cut down. **Recycling saves trees.**
- In the last 500 years, more than 800 species have become extinct. **Recycling protects wildlife habitat and biodiversity.**
- It **reduces the use of toxic chemicals** and **reduces water pollution.**
- Buying recycled products increases the demand for recycled products, which will save even more resources, which will reduce even more pollution, and creates a greater incentive for companies to use recycled goods, which lowers the cost of recycled goods, which will increase the demand...and so on.

Recycling bins can be found next to the trash dumpsters, so the next time you take out your garbage decide how much is really "garbage" and how much can be given new life. Please observe the signs on the bins. plastic bags are not to be thrown in the bins for cans. Instead of a bag, use a box to hold your empty cans, then the box can be thrown in the cardboard bin.

Helpful tips: Prevent Auto Theft

No one wants to deal with the stress (and paperwork!) of a stolen car, so here are a few helpful tips to help protect yours

- ALWAYS take your keys. 20% of stolen cars already have the keys in them!
- ALWAYS lock your car. 50% of stolen cars were left unlocked!
- Park in well-lit areas. 50% of auto thefts occur at night
- NEVER hide an extra set of keys, they're easily found if the thief takes the time to look.
- NEVER leave your car running while unattended. Many vehicles are stolen at gas stations, convenience stores, and ATMs.
- Use a sunshade instead of leaving your windows open in the summer months (they can help keep your car 49° cooler)

You can also invest in things such as an alarm system, a steering wheel lock, an engine immobilizer or kill switch.

Not only will they protect your car, but many insurance companies will offer you a discount on your rate!

Upcoming Events

Kelsey Theater
www.kelseyatmccc.org/
Andrew Lloyd Webber's "CATS!"
 March 31 and April 1 Tickets avail
 \$16 adults, \$12 seniors, \$10 kids
Charlie & The Choc Factory Live!
 April 7-9, \$8 for all

Mediterra Restaurant
www.artfuldiner.com/mediterrera.html
B.D. Lenz (Jazz)
www.bdlenz.com
 (29 Hulfish St., Princeton)
 April 12 @ 7PM, FREE!

Want to be featured in the newsletter?

If you have a story, photograph, or helpful information to share, send it to spayne@mmgtco.com

Did you know?

- ~Baby robins eat approximately 14ft of earthworms each day.
- ~Orange is the world's 3rd favorite flavor.
- ~3 jars of peanut butter are sold every second.
- ~ A sheep, a duck, and a rooster were the first passengers to ever fly in a hot air balloon.
- ~ Bananas contain the same chemical that Prozac contains to make people happy.
- ~ Every US bill (regardless of denomination) costs \$0.04 to make.